

**臺北/松山機場**  
TAIPEI/SONGSHAN AD

RCSS SID  
APU 1A(RWY10)  
APU 1B(RWY28)

TAIPEI APP 119.7 119.6 125.1	SONGSHAN TWR 118.1	ATIS 127.4 341
---------------------------------	-----------------------	-------------------

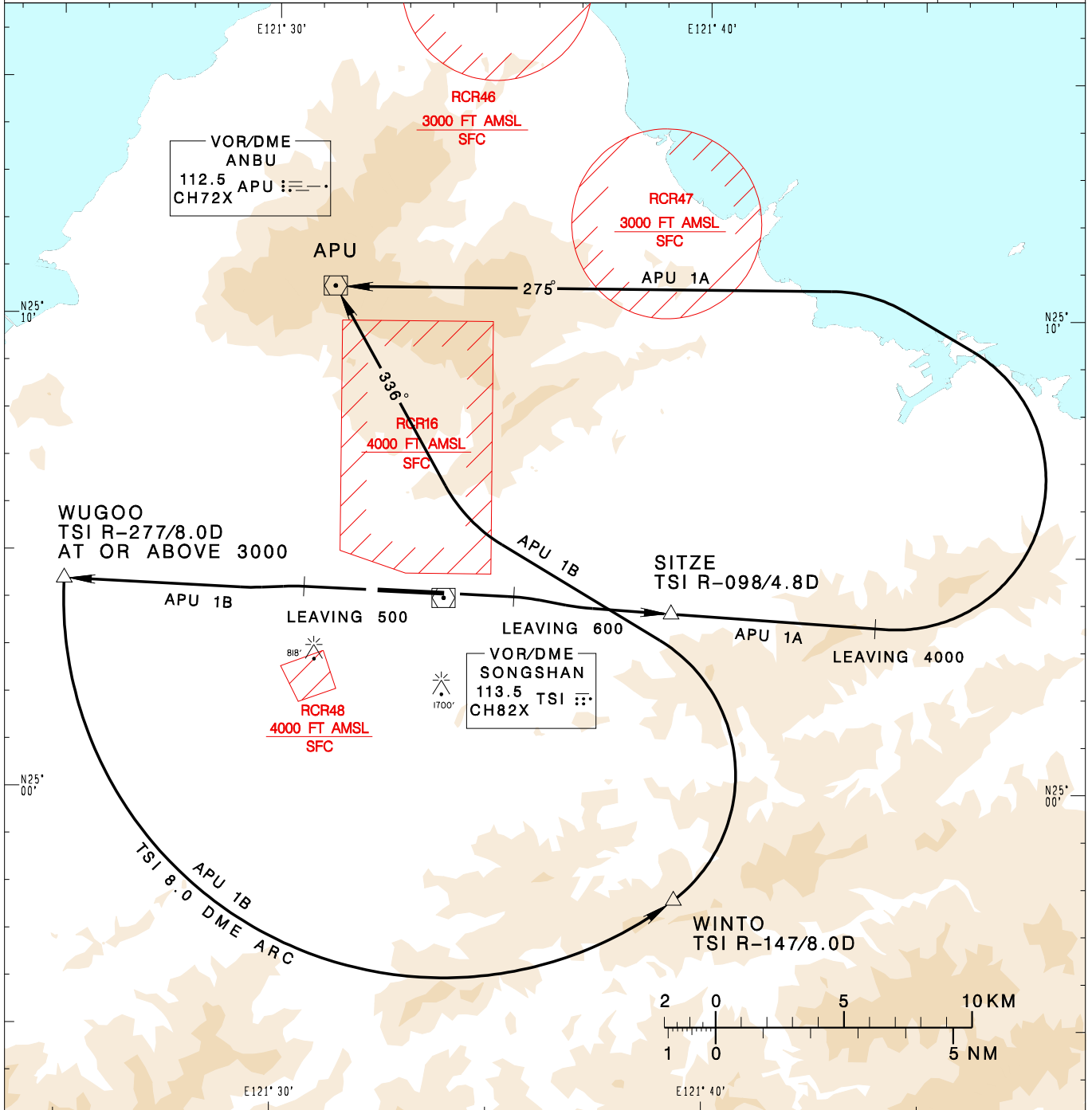
VAR 5° W-2022

9100'

MSA ARP 25NM

Apt Elev: 18'      Trans Level: FL130      Trans Alt: 11,000'

BEARINGS ARE MAGNETIC; DISTANCES ARE NAUTICAL MILES; ELEVATIONS, HEIGHTS IN FEET



CHANGES: NEW CHART

**ANBU ONE ALFA DEPARTURE**  
Climb on RWY HDG until 600ft, then track TSI R-098 to SITZE, continue TSI R-098 until 4000ft, then turn left to track APU R-095 to APU.

**ANBU ONE BRAVO DEPARTURE**  
Climb on RWY HDG until 500ft, then track TSI R-277 to WUGOO, cross WUGOO at or above 3000ft, then turn left join TSI 8.0 DME arc to WINTO, then turn left to track APU R-156 to APU.

- NOTE**
- 1.APU 1A:  
Minimum climb gradient required: 7.0%(426ft/NM) until 4000ft.
  - 2.APU 1B:  
Minimum climb gradient required: 7.0%(426ft/NM) until WUGOO.
  - 3.ATS surveillance required.
  - 4.Caution high terrain around airport.
  - 5.A 1700ft-high BLDG at 2.1NM south of THR 28.
  - 6.A 818ft-high BLDG at 2 NM SW of THR 10.